



Putting Down Roots

Quest Capital Campaign

Quest Autism Foundation is at an exciting and important juncture. Since opening in 2005, Quest operated its programs in a small donated space at the Wyckoff YMCA and leased a second space in Ridgewood, New Jersey.

In June 2016, we bought a new home - a spacious, 3-floor building in the central business district of Midland Park, New Jersey. Its location, size, structure and price were such a perfect fit for us - we thought it must be fate knocking on our door.

The purchase of this building will allow Quest to create a unique space that will bring us together as an organization, help us grow our program and fulfill our mission of providing meaningful employment to adults with autism.

We are kicking off a **2-year, \$1.2 million capital campaign** to help us raise the additional funds needed to wholly own, renovate and furnish this property. The Quest Board Members and the families of our participants have collectively pledged over \$400,000. We hope that you will be a part of this amazing accomplishment in our program's history and future.

Thank you for helping us continue on our quest to provide adults with autism meaningful employment.



>> Quest is a pioneer in the area of community based adult day programs and was the first organization of its kind in Northern New Jersey.

>> 100 % of Quest participants have paid employment from local businesses, which include Moe's Southwest Grill, BD, Universal Supply Group and more.

>> Participants also have access to life skills training, including meal preparation, cleaning, grooming, communications, personal finances and fitness.

03 Third Floor

We will be converting the third floor into a workshop so participants can produce a product to sell. The floor will also have a bathroom, an office and storage space.

02 Second Floor

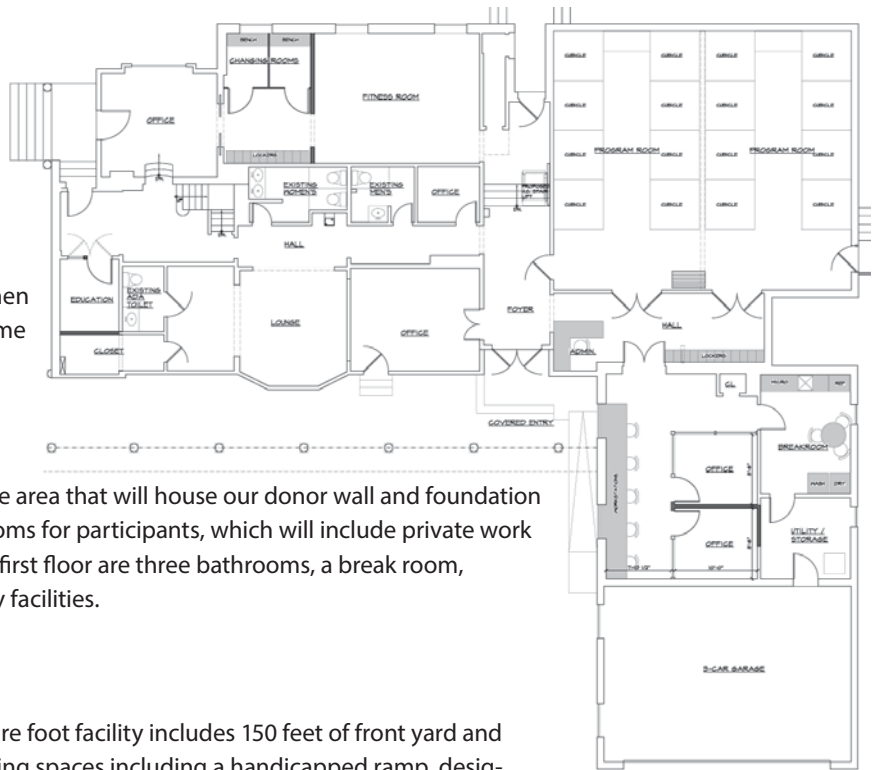
The second floor will have a spacious kitchen with dining hall, entertainment center, game room, staff lounge and bathroom.

01 First Floor

The first floor provides a spacious welcome area that will house our donor wall and foundation office. There will be two large program rooms for participants, which will include private work stations and lockers. Also included on the first floor are three bathrooms, a break room, gymnasium, conference room and laundry facilities.

00 Grounds & Parking

The property surrounding this 17,337 square foot facility includes 150 feet of front yard and 50+ foot side yard. It has a total of 20 parking spaces including a handicapped ramp, designated handicapped parking and a three car garage.



For more information or to ask about **naming opportunities**, please contact the Quest Foundation development office:

201-675-5291
jennifer@questnj.org



**QUEST AUTISM
PROGRAMS, INC.**

Donate online:

www.questnj.org

We are registered at:

Bed, Bath & Beyond under
Quest Programs

**Quest Autism Foundation is a non-profit 501(c)(3) public charity.
Your donation to the Quest Capital Campaign is 100% tax deductible**

STEP THREE: choose your payment method

- Check** payable to the Quest Autism Foundation
- Online** payment at www.questnj.org
- Credit Card** Visa Mastercard Amex

Name as it appears on your card

Card number

Expiration _____ CSV: _____

Signature

STEP FOUR: give us your address so we can say THANKS! and send a confirmation letter for tax purposes.

Name/Company

Address

City _____ State _____ Zip _____

Phone _____ Email _____



Putting
Down
Roots



Yes, I want to help Quest build for their future.

STEP ONE: choose your gift

- \$5000 \$2500 \$1000 \$500 \$250
- \$100 \$50 Other _____

STEP TWO: choose your gift option

- I am donating on behalf of a Quest family campaign.
Quest family last name: _____
- I am donating to the general campaign fund.
- I would like to hear about naming opportunities, starting at \$10,000 & up. Please call me @ _____
- I am making an in-kind donation of:

Quest Autism Foundation is a non-profit 501(c)(3) public charity. Your donation of cash, products or services to the Quest Capital Campaign is 100% tax deductible.